



The Spring Animal Festival



A Spring Animal Festival will be held at the Yumemigasaki Animal Park in Saiwai ward. It will start at 10:00am on Sunday the 27th of March and finish at 3:00pm. There will be lots of events such as making origami animals, a showing of a video on animals and a "Meet & Touch" the animals corner. At the same time as the Spring Animal Festival you will be able to enjoy Hanami (cherry blossom watching) amongst the parks 500 cherry trees which will be in blossom at this time. To get to the Yumemigasaki Animal Park you should take the bus from the West Exit of Kawasaki Station. Take the bus as far as the bus stop marked Yumemigasaki Animal Park-Mae, and then it is a 5 minute walk. Or alternatively you can take the JR Nambu Line and get out at Kashimada Station and it is then a 20 minute walk to the Yumemigasaki Animal Park.

Japanese Classes



Japanese classes will be held throughout Kawasaki's wards at Shiminkan (Citizen Centers) and other facilities. At these Japanese classes you can study things such as the important basics of Japanese conversation for everyday life in Japan, you will be able to learn written Japanese and learn about Japanese lifestyle customs .

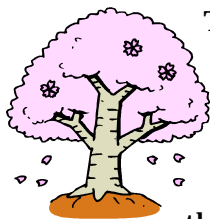
At the Nakahara Shiminkan Japanese classes are every Tuesday : in the morning from 10:00am to 12:00 noon, in the evening classes are from 6:30pm to 8:30pm. The morning Japanese classes will start from April 19th and the evening classes will start from April 12th. If you want to join either of these Japanese classes please come along on these days to the Nakahara Shiminkan.

At the Takatsu Shiminkan too you can study Japanese. On Thursdays there are Japanese classes in the evening which will be starting from May 6th. Morning Japanese classes will begin from May 12th. If you wish to apply to the Takatsu Shiminkan lessons please apply from 10:00am on the 21st of April.

There are also Japanese classes at other Shiminkan and Education and Culture Centers throughout Kawasaki. Please contact these facilities for further information. It is FREE to take these Japanese classes but you have to pay some money towards the teaching materials used.

Sakura, Cherry Blossom, Ohanami

182

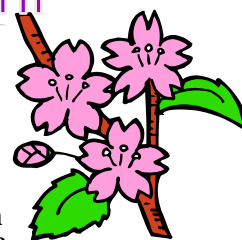


There are famous places for cherry blossom trees in Kawasaki, where you can enjoy the Japanese traditional custom of Hanami. Hanami is a kind of picnic under blooming cherry trees.

First up is Midorigaoka-Reien, this being a cemetery set up by Kawasaki for the faithfully departed. During the cherry blossom season Midorigaoka-Reien, which has several hundred cherry trees, is one of

the best places of all the competing places to see cherry blossoms. You can get to Midorigaoka-Reien by getting out at the Tsudayama station on the JR Nambu line.

Next is the Yumemi-gasaki Animal Park. There are over 400 animals from at least 50 different species, for example the Lesser Panda and the Humboldt Penguin. Within the Yumemi-gasaki Animal Park there are over 500 cherry trees such as the Higan and the Someiyoshino species. To get to the Yumemi-gasaki Animal Park you can take a bus from the West Exit of Kawasaki station and get off at the bus stop



marked Yumemi-gasaki Dobutsu Koen Mae bus stop and then its a 5 minute walk.Or you can reach the Yumemi-gasaki Animal Park by getting out of the Kashimada station on the JR Nambu line and then its a 20 minute walk to The Animal Park.

Next: the Nikaryo-yosui stream walkway that is nearby the area from Shukugawara station on the JR Nambu line and Ryokka Centre. This area of cherry trees has been kept in good condition thanks to preservation group set up by the local people.

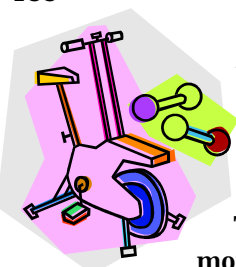
Following on,we have Nikaryo-yosui stream that goes through Nakahara ward. The cherry trees here start from the Imaikamicho-ryokudo area,past the Nakahara peace park and then go onto the Nakahara ward office.From the ward office the Nikaryo-yosui splits up becoming the Shibakawa which continues on to Motosumiyoshi and the Karugamonosato.

Lastly there's the Kajigaya Dai-ichi Koen in Takatsu ward. Here there are over 280 cherry trees that when in bloom become a busy attraction for people doing "Hanami".Its a 15 minute walk to the Kaijgaya Dai-ichi Koen from Kajigaya station on the Denentoshi line.

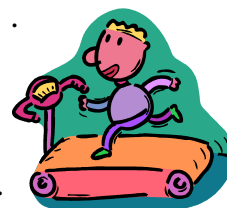
These are all the popular places you can visit when the cherry blossoms are in bloom, not only are the beautiful they are free to view.If you do plan to have a Hanami party be sure to clean up and rubbish afterwards.

183

Training Rooms



At the Kawasaki City Exercise Hall and the various municipal sports centers in Saiwai, Takatsu and Asao wards you can enjoy using muscle training facilities anytime. There are training machines assembled that can help you build muscles or help you burn off body fat.



The times you can use the training rooms are divided into three different periods: morning, afternoon and night. The hours for the morning period are 9:00am to 12:00noon. The afternoon period is from 1:00pm to 4:30pm,and finally the night period is from 5:30pm to 9:00pm.

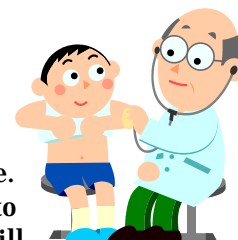
The charge for using the training rooms is 200 yen for adults; for students and people aged up to 20 the cost is 100 yen. The training rooms can be used by anyone of and above Junior High School age.

There are also training rooms located at Todoroki Arena, the Shimin Plaza and Yonetty Ozenji. Please phone any of these facilities to find out and confirm about user costs, equipment you might need to bring, days the training rooms are closed and any other kind of information.

Kawasaki Doctors / Kawasaki no O-Isha-san



“Doctors in Kawasaki City (Kawasaki no O-Isha-san)”is a service on information on medical facilities that you can access on the top corner of Kawasaki City's Home Page. When you access this page and input your address you will be able to



see a list of doctors and their specialties in your neighbourhood. You will be able to search for doctors offering specific treatment such as vaccinations. This web page is not just in Japanese but also in English, Korean and Spanish.

Please use this service if you ever need to.

Issued by The Kawasaki International Association

237-1 Kizuki Gion Cho,Nakahara-Ku, Kawasaki 211-0033 Kawasaki International Center

Tel044-435-7000 Fax044-435-7010 E -mail:kian@bremen.or.jp HP URL:<http://www.bremen.or.jp/kian/>