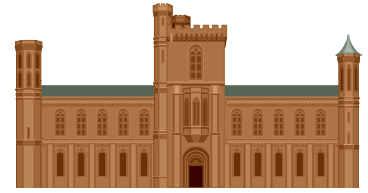


148

Okamoto Taro Museum



The special exhibition called "This is Japan Photography : Okamoto Taro vs Naito Masatoshi" is now being held at the Okamoto Taro Museum.

From 1957 to 1966 Taro Okamoto traveled throughout Japan, from Aomori in the North to Okinawa in the South, taking photographs. After coming across Okamoto Taro's work, Naito Masatoshi decided to help Okamoto develop and print his photographs. Naito felt that Taro Okamoto had an instinctive sense for photography with an ethnic point of view. According to Naito the prints of Okamoto's work that Naito selected are a good example of the Okamoto Theory.

At this exhibit you will be introduced to the photographs that Naito chose from Okamoto's negatives. The exhibit is open until Sunday the 3rd of October at the Okamoto Taro Museum in the Ikuta Ryokuchi Park. Entrance fee is 700 yen for adults, 500 yen for high school and university students and free for those 65 years of age and above, and for those of and under junior high school age.

The museum is open from 9:30 am to 5:00pm, last entry being at 4:30pm and closed on Mondays but open if Monday happens to be a national holiday and closes on the following Tuesdays instead.

It's about a 17 minute walk from Mukogaoka-yuen Station on the Odakyu Line to the Okamoto Taro Museum.

Not only does Ikuta Ryokuchi Park have the Okamoto Taro Museum, it also has the Youth Science Museum. Within this museum there is a planetarium which runs on the Megastar II system. Megastar II was developed by Mr.Oohira of Tama Ward, and its special feature is that you can see images of 4 million stars and constellations.



Another point of attraction at Ikuta Ryokuchi Park is the Traditional Crafts Hall. At the Traditional Crafts Hall you can experience indigo dyeing.

Please pop down to Ikuta Ryokuchi Park and have yourself a good time.

149

Insurance for Citizen's Volunteering Activities

This is an insurance scheme that is available to volunteer groups which are actively operating here in Kawasaki. This insurance is open to members of groups that are strongly active and to people who either live, work or study in Kawasaki.

You can benefit from this insurance scheme as a volunteer group, a group or as a private individual. You merely have to contact and send a convenient formal report after an accident happens, you do not need to be covered by a different insurance scheme.

The insurance scheme is open to volunteer activities as follows : independently structured groups which are made up of unpaid private individuals or unpaid regional citizens bodies that continuously do planned activities for the public good.

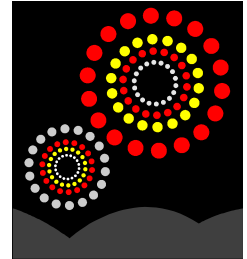
For example, disaster prevention groups, sports activities leaders, cultural activities leaders and regional citizen groups. The insurance covers the burden borne for the legal responsibility for damages in situations where an injured party or 3rd person makes a claim for damages (damages that could be related to life, physical injuries or financial losses) that were caused through an error of a volunteer who was in the course of doing a volunteer activity.

For example, if a child, who was part of a children's hiking trip, was injured because of being misled along a wrong hiking route, then the insurance would cover any damages sought.

Another example, this time related to a volunteer activity : if a member of a clean-up campaign was hit and killed by a car while they were cleaning then the insurance would cover the situation.

One more example would be that if a volunteer, while on volunteer duty, was driving a car to meet and pick up another volunteer and then happened to meet with an accident which resulted in death or injury, they would be covered by this insurance scheme.

If any chance activity happened to you while you were doing a volunteer activity please phone the Foundation at the Kawasaki Citizens Activity Center (Zaidan-Hojin Kawasaki Shimin Katsudo Center) at 044-430-5566. After you have phoned please send all the relevant papers and documents to this center. If you have any further questions please telephone the Foundation at the Kawasaki Citizens Activity Center on 044-430-5566.



150

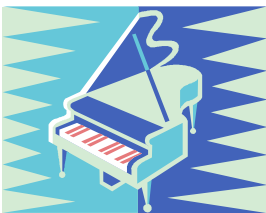
Tama River Fireworks

You will be able to enjoy a huge panoramic view of fireworks filling the night sky over the Tama river. The date and time is Saturday the 21st of August, the opening ceremony will start at 6:30pm and then the fireworks will go off from 7:00pm to 8:00pm.

They are to be let off at the Tama river side area of Suwa in Takatsu Ward. This area is between the Daisan Keihin highway and the Futako bridge. The closest station is Futako-Shinchi on the Denen-toshi line, but as this station is usually very crowded during the fireworks, it is best to use the Musashi-Mizonokuchi Station on the JR Nambu Line or Mizonokuchi or Takatsu Stations on the Denen-toshi Line. Furthermore, there are no parking spaces available. If you are walking along the Futako or Shinfutako bridges please take care not to cause an obstruction or an accident.

If the weather is bad or rough then the firework display will be held on the following day of August 22nd.

Saiwai Ward Dream Concert



This concert will be held on Thursday August 19th from 12:10pm to 12:45pm. Ms. Yurino Izumi will be performing on the piano. In 2002 Ms. Yurino Izumi became the youngest person ever to win first prize at the Porto City International Music Contest that was held in Portugal. She had to compete with contestants from America, Australia and Hungary to win this prize. Ms. Yurino Izumi has also performed with the Tokyo Philharmonic Orchestra. The Dream Concert will be on the first floor lobby of the Saiwai Ward office. Entrance is free and you do not need to make a booking, just show up and enjoy the music.

Issued by The Kawasaki International Association

237-1 Kizuki Gion Cho, Nakahara-Ku, Kawasaki 211-0033 Kawasaki International Center
Tel 044-435-7000 Fax 044-435-7010 E-mail: kian@bremen.or.jp HP URL: <http://www.bremen.or.jp/kian/>