

142

Asao Lunch Time Concert

To celebrate the 80th anniversary of the setting up of Kawasaki as a city ,there will be lunchtime concerts held in the Asao Ward Office in June, July and August. These lunchtime concerts will last a week with a performance being held each day.

The first one will start at 12:15 on Monday, June 21st on the second floor of the Asao Ward Office and go on until Friday, June 25th .

Monday, June 21 st	piano and orchestral ensemble
Tuesday, June 22 nd	piano and vocal
Wednesday, June 23 rd	guitar performance
Thursday, June 24 th	musical bells performance
Friday, June 25 th	piano concert



It is FREE to enter, just come along on the day of the concert. The Asao Ward Office is a short walk away from the Shin-Yurigaoka Station on the Odakyu Line.



Ajisai(Hydrangea)Flowers



Next up, information about Ajisai (Hydrangea) flowers that are currently in bloom. Here in Kawasaki there are two temples that are famous for their ajisai. Of these two places, the Myorakuji Temple in Nagao area of Tama Ward, will be holding an Ajisai Festival on Sunday, June 20th. On this day 300 Ajisai flowers will be given to visitors on a first-come-first-served basis. Within the temple grounds you will be able to enjoy haiku poetry readings and flower arrangement displays. There will also be an area where you can buy locally produced vegetables.

You can get to the Myorakuji Temple by following the "Nagao no Sato Meguri" walking course. This course goes between the JR Nambu Line Shukugawara Stations and Tsudayama Station. Following the course from Shukugawara Station, you first come to the Ryokka Greenery Center, from here you next come across the Myorakuji Temple. From the Myorakuji Temple you next arrive at the Higashi- Takane Shinrin Prefectural Park(Forest Park). Next you will come through the Midorigaoka Reien Cemetery and finally you will arrive at Tsudayama Station.

The total length of the trail is 5.5 km and it takes about 3 to 4 hours to walk along. All along the "Nagao Sato no Meguri" course there are signposts here and there that keep up in the right direction.

So why don't you have a wonderful day by going for a walk along the "Nagao Sato no Meguri" and pop in to the Myorakuji Temple to enjoy the Ajisai Festival.

Harvard Acappella Krokodiloes Concert

June 26 from 2:00p.m. to 3:00p.m. (open at 1:30pm)

Kawasaki International Center (10 min. walk from Moto-sumiyoshi Station on the Toyoko Line)

Admission: ¥ 2,000 (on a first-come-first-served basis)

Application: June 15 (Tue.) 10:00am ~ TEL: 0 4 4 - 4 3 5 - 7 0 0 0

143

Shimin Plaza(Citizen's Plaza)

The Shimin Plaza facility in Takatsu Ward here in Kawasaki. The Shimin Plaza was built and set up to commemorate the anniversary of the establishment of Kawasaki as a city.

A first brief description of the Shimin Plaza is that when you enter it there is a big wide plaza area. This plaza area is 1600 sq meters wide and the roof is 19 meters above the floor of the plaza. It looks like a small park, and you can even feel relaxed if its raining outside.

Within the Shimin Plaza there is the 500 seat "Furasato" Theatre,where movies are shown for free during the summer holidays and other periods during the year.

Also there are facilities for the elderly at the Shimin Plaza. For example there is a public bath. The public bath is separated into male and female sections and is open from 10:00 am to 2:00 pm. and is free to use for pensioners within Kawasaki City. Also free for Kawasaki pensioners is the use of the Oohiroma big

room, this is especially relaxing after you have used the bath. The Oohiroma is open from 9:00am to 4:00pm.

For children there is an indoor playroom open between 9:00am and 5:00pm. In the outside area of the Shimin Plaza there is a children's plaza. Both are free to use.



Also, in order for you to improve your health and strength there are a selection of weight machines in a carefully designed training room. This costs 500yen to use and it is open for 3 periods during the day: mornings, afternoons and evenings.



Outside of the Shimin Plaza Building is a Japanese style garden with an area of 15,000 Sq meters. This garden has been designed to show the beauty of nature through the use of waterfalls, flowing water and ponds.

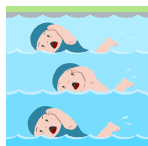
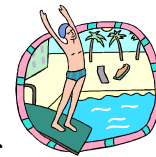
There are also hotel-like accommodation facilities at the Shimin Plaza. Rooms come in a size of 10 tatami mats to 12.5 mats. Check-in is at 3:00pm and check-out is at 10:00am. The fee for the room is 3,500 yen per adult for groups of over 4 people; for groups of 3 adults its 4,000yen.

There is also a children fare.

You can get to the Shimin Plaza by taking the train on the Den-en-toshi sen Line to Kajigaya Station. It is about a 15-minute walk to the Shimin Plaza from Kajigaya Station. Alternatively, you can catch a bus from Musashi-Mizonokuchi Station and get off at the bus stop marked Shimin Plaza.

144

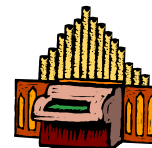
Swimming Pools



There are 7 city run swimming pools within Kawasaki city. The regular sized swimming pools are at Daishi, Todoroki, and for children small sized swimming pools are at Fujimi, Oda, Oguchi Nishi, Hirama and Inada . They will be open to the public from July 10th to August 31st, from 9:00am to 5:00pm. The fee being 300yen for adults and 100 yen for young people aged between 3 and 15.

Children of preschool age must be accompanied by an adult.

The Muza Kawasaki



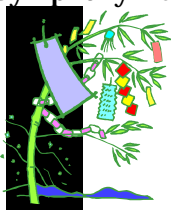
The grand opening of the Muza Kawasaki Symphony Hall, which is located at the West Exit of Kawasaki Station, will be on July 1st. There is seating for over 2000 guests in an auditorium that looks like a vineyard surrounding a stage. This means that you can even hear the orchestra from behind where

they are playing. Also, the Swiss made pipe organ with 5123 pipes is one of the best in Japan.

Before its grand opening you'll have a chance to have a look on the facility and to listen to a mini concert of the pipe organ for free for the three days of the 15th, 16th and 17th of July. The time for the 15th and 16th is from 2:00pm to 4:00pm, and the mini concert is starting at 3:00. Later in the evening there will be another session starting at 6:00pm to 8:00pm and the concert at 7:00pm.

On the 17th of July: in the morning from 10:00am to 12:00pm, the music from 11:00am; in the afternoon from 2:00pm to 4:00pm, the pipe organ at 3:00pm.

So why don't you come along and listen to the pipe organ at the newly opened Muza Kawasaki Symphony Hall. You do not have to apply or pay, merely come along on the day and you can get in for free.



International Festival

Sunday, 4th, July from 10:00a.m. to 8:00p.m.
Kawasaki International Center Tel:044-435-7000

At last the annual festival that you have been waiting for is just around corner.

You can experience various foreign cultures, watch a variety of shows, browse the flea market and world market, and try many ethnic foods. Also free counseling for non-Japanese is available.

Please come along to the International Center and enjoy a midsummer day at the festival.

Issued by The Kawasaki International Association

237-1 Kizuki Gion Cho, Nakahara-Ku, Kawasaki 211-0033 Kawasaki International Center
Tel044-435-7000 Fax044-435-7010 E-mail:kian@bremen.or.jp HP URL:<http://www.bremen.or.jp/kian/>