

KAWASAKI INTERNATIONAL ASSOCIATION NEWS

English, Chinese, Korean, Spanish, Portuguese, Tagalog, Easy Japanese versions are available.

Please visit the Kawasaki International Association's homepage: <http://www.kian.or.jp/hlkwsk.html>

(Information by Kawasaki City)

Issued by the Kawasaki International Association

Kawasaki Halloween 2009

The now-famous, annual Kawasaki Halloween is coming soon. This year, the 13th Halloween will be held between Oct.24th and November 1st around the "LA CITTADELLA," close to the east exit of JR Kawasaki Station. The Halloween Parade will be held on Oct.31st. As it is on a Sunday, this year's parade is expected to be the most exciting one yet.

Further Information: Kawasaki Halloween Project Tel: 044-233-1934

**Kawasaki Citizens' Festival**

Kawasaki Citizens' Festival will be held for three days between October 30th and November 1st around the Fujimi Park Area, including Kawasaki Stadium, Kawasaki Bicycle Race Track, and the Fujimi Park Baseball Field. At each location, there will be many events going on, such as product exhibitions, bazaars, performances, and several workshops for kids.

Also, there will be a parade starting at 11:00a.m. on the last day of the festival, November 1st.

Further information: The 32nd Kawasaki Citizens' Festival Project Team TEL: 044-200-2308

Multi-Language Information about H1N1 Influenza from Kanagawa Prefecture

Kanagawa Prefecture is offering information about H1N1 Influenza through their website.

There are 11 languages available: Easy Japanese, English, Chinese, Korean, Spanish, Portuguese, Thai, Tagalog, Vietnamese, Laotian, and Cambodian.

The site address is:

http://www.pref.kanagawa.jp/osirase/kokusai/2seikatujouhou/buta_influenza.html

Further information: KENMIN-BU, KOKUSAI-KA, TEL: 045-210-3745 FAX: 045-212-2735

Monthly Topics

The 15th Kanagawa Biennial World Children's Art Exhibition in Kawasaki (Free Admission)

Time and Date: 09:00-21:00 Thursday, November 19th- Wednesday, November 25th

Place: Kawasaki International Center 1F Exhibition Hall

This time there were 20,723 individual entries from 84 countries and 1 region. The three pictures that were awarded top prizes and 520 other prizewinning pictures will be exhibited around Kanagawa.

(Information from KIA, Events, Classes, Q&A [Consulting])

**Global Understanding Seminar for intermediate and advanced English Learners**

The classes will be conducted in English. No interpreter is available.

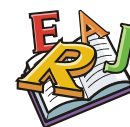
Class Schedule

#1 Sunday, November 29th Theme: Ivory Coast As If You Lived There

The speaker, who is from the Republic of Cote d'Ivoire, will introduce the Ivory Coast and area.

#2 Sunday, December 13th Theme: Baltimore, Kawasaki's Second-Oldest Sister City

The speaker, who is from Maryland and has been working for Kawasaki City as a coordinator of International relations, will introduce Baltimore City.



Baltimore is one of Kawasaki City's Sister Cities, and 2010 is the 30th anniversary of the foundation of the Sister City relationship between the two cities, and a jazz band will come to Kawasaki to celebrate, January 2010.

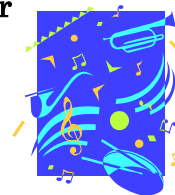
Time: 2:00p.m. – 4:00 p.m. Fee: 1000yen (for two classes) 40 openings

How to apply: Please write ① Name of lecture ② Name ③ Address ④ e-mail address(PC only) ⑤ telephone number on a reply-paid postcard and mail it to Kawasaki International Association (2-2, Kizuki Gion-cho, Nakahara-ku, Kawasaki-shi). The card must arrive by November 16th, 2009.

Special Concerts celebrating Kawasaki & Baltimore's 30th Anniversary as Sister Cities

Date: Tuesday, January 19th

To celebrate the 30th Anniversary of the establishment of Kawasaki and Baltimore as Sister Cities, a Jazz ensemble will visit Kawasaki and three concerts will be held in January, 2010.



- Sunday, January 17th 14:00- Black Hole, Senzoku Gakuen College of Music (free)
- Tuesday, January 19th 18:00- Kawasaki International Center (1000yen including the fee for the friendly gathering after the concert)
- Saturday, January 23rd 14:00- Showa Ongaku Daigaku

Medical check up for Non-Japanese Females

Time & Date: 13:30-15:00 Saturday, November 21st, 2009

Place: Minato-machi Clinic 2F Yokohama-shi, Kanagawa-ku, Kinkou-cho 7-6

How to get to the Clinic: 1 minute walk from Kanagawa Station on the Keikyu Line

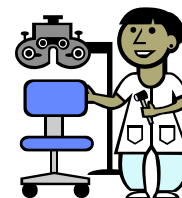
Or 7- minute walk from Northern East Exit of the Yokohama Station

Tests you will undergo: Cervical Cytology, Ultra Sounds, and Chlamydia

Fee: 5000yen for all three tests, no matter whether or not you have a medical insurance card.

English, Tagalog, Korean, Thai, Spanish, Portuguese, Myanmar interpreters are available.

Medical staff is all female.



Asao Helpline for Non-Japanese

Asao Helpline is providing free medical information such as location of medical facilities, health insurance system, medical examination at Health Centers, and vaccinations.

Hours: Every Monday and Friday (except national holidays), 10:00a.m. to 3:00p.m.

Tel:044-951-6468



Counseling in Foreign Languages (10:00 – 12:00, 13:00 – 16:00) TEL: 044-435-7000

English	Monday - Saturday	Chinese	Tuesday, Wednesday, Friday
---------	-------------------	---------	----------------------------

Portuguese	Tuesday, Friday	Spanish	Tuesday, Wednesday
------------	-----------------	---------	--------------------

Korean	Tuesday, Thursday	Tagalog	Tuesday, Wednesday
--------	-------------------	---------	--------------------

* Counseling in Japanese is also available. Please feel free to come for a consultation.

* Counseling Services for Foreigners on Visa and Others, with a lawyer who is a notary public (Gyouseishoshi)

Next Available Counseling Session with Gyouseishoshi

Date & Time: Sunday, August 16 2:00 pm – 4:00 pm

Venue: Kawasaki International 2nd floor Conference Room

Place: Kawasaki International Center Date & Time: Sunday, May 17 from 2:00pm to 4:00pm (Ms. Kambe)